

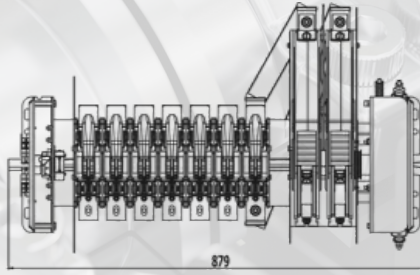
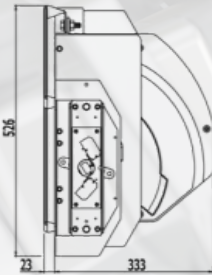
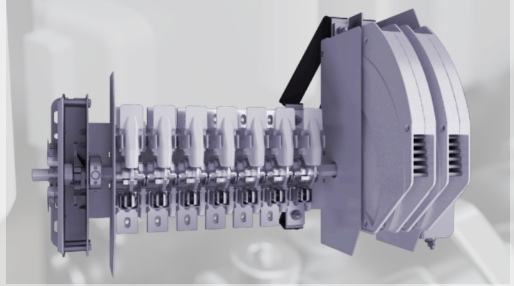
OTTER SWITCH

Load breaking and making switch.
Capable of making on a fault.

Complies to: BS EN 50123-1 & 3
IEC 62497-1 & IEC 61992-1

Key Features

- Fast acting over-centre spring mechanism
- Manual or motor driven options
- High performance double break contacts
- Separate current carrying and current breaking contacts
- 800A to 5000A Normal current rating depending upon number of modules installed.
- Position indication by micro switch or auxiliary switch in addition to visual indication.
- Ultra-low smoke insulation material (LU approved)
- Left hand, right hand and double pole options



Rated Voltage	1800VDC
Rated Insulation Voltage	2.3kV
Overvoltage Level (BSEN 50123-1)	OV4
Rated impulse withstand voltage	12.0/14.4kVp
Power frequency withstand voltage	5.5/6.6kV
Categories (BSEN 50123-3)	VI
Normal Current	800 - 5000A
Making Current	Up to 65kA
Breaking Current	Up to 15kA
Withstand Current	Up to 70kA / 100kAp 250ms
Mechanical Endurance	M2: 10000 Operations

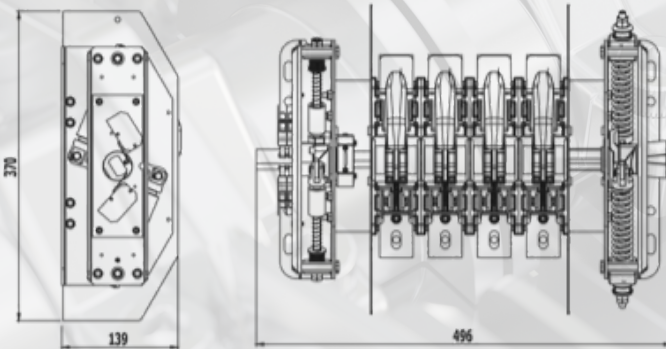
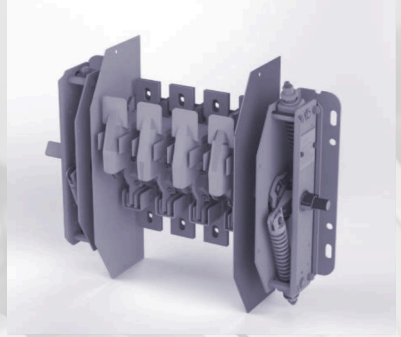
OTTER DISCONNECTOR

Off load disconnecter.
Capable of making on a fault.

Complies to: BS EN 50123-1 & 3
IEC 62497-1 & IEC 61992-1

Key Features

- Fast acting over-centre spring mechanism
- Manual or motor driven options
- High performance double break contacts
- 800A to 5000A Normal current rating depending upon number of modules installed.
- Position indication by micro switch or auxiliary switch in addition to visual indication.
- Ultra-low smoke insulation material (LU approved)
- Left hand, right hand and double pole options



Rated Voltage	1800VDC
Rated Insulation Voltage	2.3kV
Overvoltage Level (BSEN 50123-1)	OV4
Rated impulse withstand voltage	12.0/14.4kVp
Power frequency withstand voltage	5.5/6.6kV
Categories (BSEN 50123-3)	V
Normal Current	800 - 5000A
Making Current	Up to 65kA
Withstand Current	Up to 70kA / 100kAp 250ms
Mechanical Endurance	M2: 10000 Operations